

ROCKVILLE

TITAN MIX12A/TITAN MIX12C
12" POWERED SPEAKER/SUB 8-CHANNEL MIXER
PA SYSTEMS

OWNER'S MANUAL

ATTENTION:
WATCH THIS VIDEO BEFORE FIRST USE!

Scan the **QR codes** or visit the **URLs** for essential information, guides (video and/or written), and tips to make the most out of your purchase.

If you prefer written instructions, please read ahead!

With Rockville you get many options.



rockvillesupport.com/titan-mix12a-box-1



rockvillesupport.com/titan-mix12a-box-2



rockvillesupport.com/titan-mix12c-box-1



rockvillesupport.com/titan-mix12c-box-2

Missing items? If you ordered a bundle that includes more than one product and you are missing part of your bundle then it just means your order shipped from two different warehouses. You will receive the remaining items very soon. If you have any concerns or inquiries, feel free to call our customer support center at 1-646-758-0144, 24 hours a day/7 days a week.

Thank you for purchasing this Rockville product. Please read this owner's manual carefully for proper use of your TITAN MIX12 Series (noted as TM 12 throughout the manual) powered speaker and sub. Should you need assistance, please call our technical help line at 1-646-758-0144, 24 hours a day/7 days a week.

IMPORTANT SAFETY INSTRUCTIONS



- To reduce risk of electric shock, never open the unit. There are no user-serviceable parts; refer service to the Rockville service center.
- Do not expose this unit to any kind of moisture.
- Please ensure that the unit is situated in a properly ventilated area.
- Make sure the unit is placed on a level and stable surface.
- This unit can operate with either 110V or 220V.

Included

TITAN MIX12A

- 12" Powered subwoofer with DSP and 8-channel mixer
- One column array speaker with eight 2.75" Neo drivers
- One column array speaker with four 2.75" Neo drivers
- Travel bag for the column speakers
- Travel cover for the subwoofer
- 8 Foot Power cable
- Access to training video(s) for setup and use
- Manual

TITAN MIX12C

- 12" Powered subwoofer with DSP and 8-channel mixer
- One column array speaker with eight 3.5" Neo drivers w/four midrange diffusers
- Two pole options to connect the column to the sub (12" and 29")
- Travel bag for the column speaker and poles
- Travel cover for the subwoofer
- 8 Foot Power cable
- Access to training video(s) for setup and use
- Manual

How to Avoid Irritating Feedback

The placement of your microphone is critical in avoiding feedback through your TM 12 speaker. Never set up your microphone in front of the speaker. Always set up your microphone behind the speaker. When approaching the speaker to make any adjustments, approach the speaker from the rear and do not walk directly toward the front of the speaker.

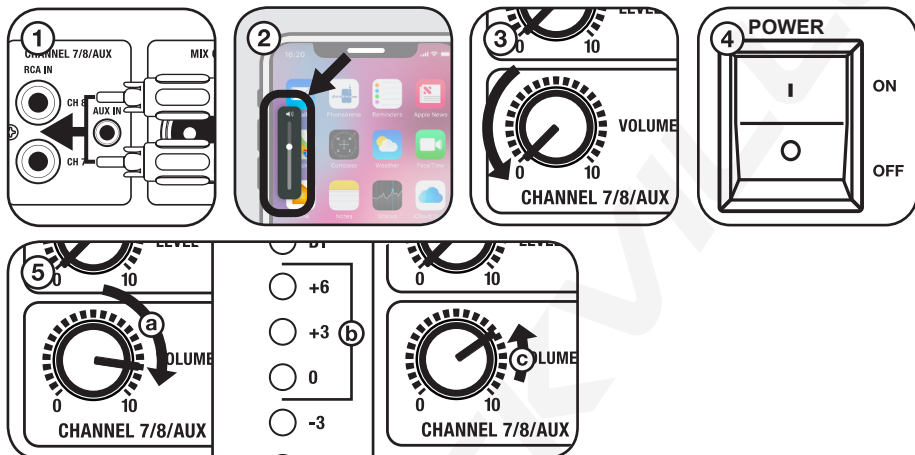




Setting Level Controls

It is best practice to set your input volume (gains) in this manner:

1. Connect the appropriate input cable (3.5mm or RCA). In this instance we will be using the RCA line inputs.
2. Raise the line level input device's volume (smartphone [pictured], tablet, MP3 player, etc.)
3. Set the CHANNEL7/8/AUX volume control to 0.
4. Set the power switch to ON.
5. Slowly turn up the CHANNEL7/8/AUX volume control (a). As soon as the yellow indicator LEDs go on (b) or you hear any distortion, turn LINE/MP3 LEVEL down one or two notches (c).



! PLEASE NOTE

A. Because mixers feature two volume controls (channel, sub level, and master), when connecting one via the line input, the procedure is slightly different. Set the CHANNEL LEVEL control to 50% and set your mixer's master volume to 50%. Make the adjustments in step 3 on the mixer channel level control. If after making these adjustments the signal still isn't strong enough, you can additionally boost the signal by turning up the MASTER and SUB level controls.

B. When adjusting the MIC/GUITAR/LINE LEVEL control, you must speak into the microphone and adjust the control as needed. This is because adjustments to the mic input are a matter of mic sensitivity/volume in relation to the music volume and not necessarily a clipping issue.

Microphone/Guitar Input

Your TITAN MIX12 features four balanced combo XLR/1/4" TRS microphone/guitar inputs.

1. Switch OFF the unit.
2. Using the appropriate cable (XLR, 1/4" TRS, or 1/4" TS) connect your microphone or guitar to the CH1, CH2, CH3, or CH4 of the combo input.
3. Switch ON your TITAN MIX12. Set the MIC/GUITAR/LINE selector button to MIC/GUITAR.
4. Refer to the "Setting Level Controls" section of this manual for instructions on how to properly adjust the input volume (gain).

When working with a microphone, always stand behind the TM 12 to avoid feedback while making adjustments.

Line Input

You can connect an additional signal source such as a CD player, DVD music player, MP3 player, DJ mixer or controller, etc. Plug the device directly into the combo 3.5mm or RCA jacks in the CH7/CH8/AUX section, or the CHANNEL 1 – CHANNEL 4 combo XLR/¼" TRS inputs. When using CHANNEL 1- 4 input, make sure the MIC/GUITAR/LINE selector button is set to LINE.

XLR/¼" TRS Input

1. Switch the unit OFF.
2. Connect the music source to the combo XLR/¼" TRS input of your choice (CH1 - CH4) using an XLR or ¼" cable. Make sure the MIC/GUITAR/LINE selector switch is set to LINE.
3. Switch the unit ON.
4. Refer to the "Setting Level Controls" section of this manual for instructions on how to properly adjust the input volume (gain).

RCA Input

1. Switch the unit OFF.
2. Connect the music source to the RCA jacks in the CHANNEL 7/8/AUX section.
3. Switch the unit ON.
4. Refer to the "Setting Level Controls" section of this manual for instructions on how to properly adjust the input volume (gain).

Bluetooth Pairing

To connect your iPod, iPhone, MP3 player, Android phone, or any other Bluetooth-capable device, follow the steps listed below. If you have problems pairing your device, please check the troubleshooting guide.

1. Switch the unit ON and short press the BT/TWS button. The blue BT LED indicator will begin to flash indicating the unit has entered BT pairing mode.
2. Turn on the Bluetooth feature on your device and ensure that it is discoverable. Look for "TITAN MIX 12" on the list of available devices and select it.
3. Once paired, the blue LED will stop flashing and remain lit. The TM12 unit will remember the last paired device. When the unit is in BT mode and the device is nearby, it will connect to it automatically.
4. Volume is controlled via your device, the CH5/CH6/BT volume control knob, the SUB LEVEL knob, and the MASTER VOLUME knob. All other functions, such as playback and track selection, are controlled via your device.
5. To disconnect a device, short press the BT/TWS button. The blue BT LED indicator will turn off indicating your device has been successfully disconnected.

True Wireless Stereo (TWS) Speaker Linking

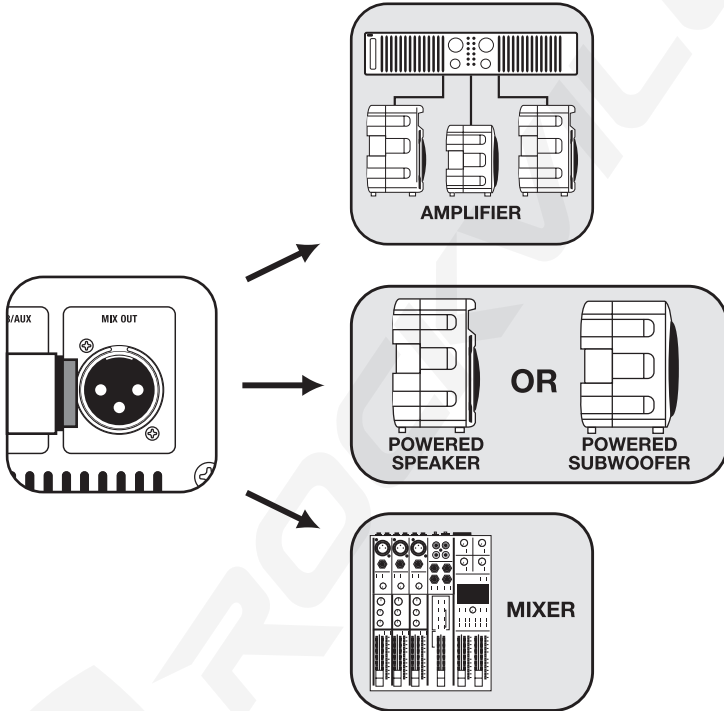
The TM12 features True Wireless Stereo (TWS) linking via Bluetooth. This means you can purchase two of these speakers and link them to play wirelessly in stereo.

1. Turn on the 2 units and activate Bluetooth mode by short pressing the BT/TWS button. (slow flashing LED on both.)
2. Press and hold for 2 seconds the BT/TWS button on one unit (quick flashing LED). The units will automatically pair. The BT LED on the first unit will remain lit (right CH) and the other unit's LED will flash slowly (left CH).
3. Turn on the Bluetooth feature on your device and ensure that it is discoverable. Look for "TITAN MIX 12" on the list of available devices and select it.

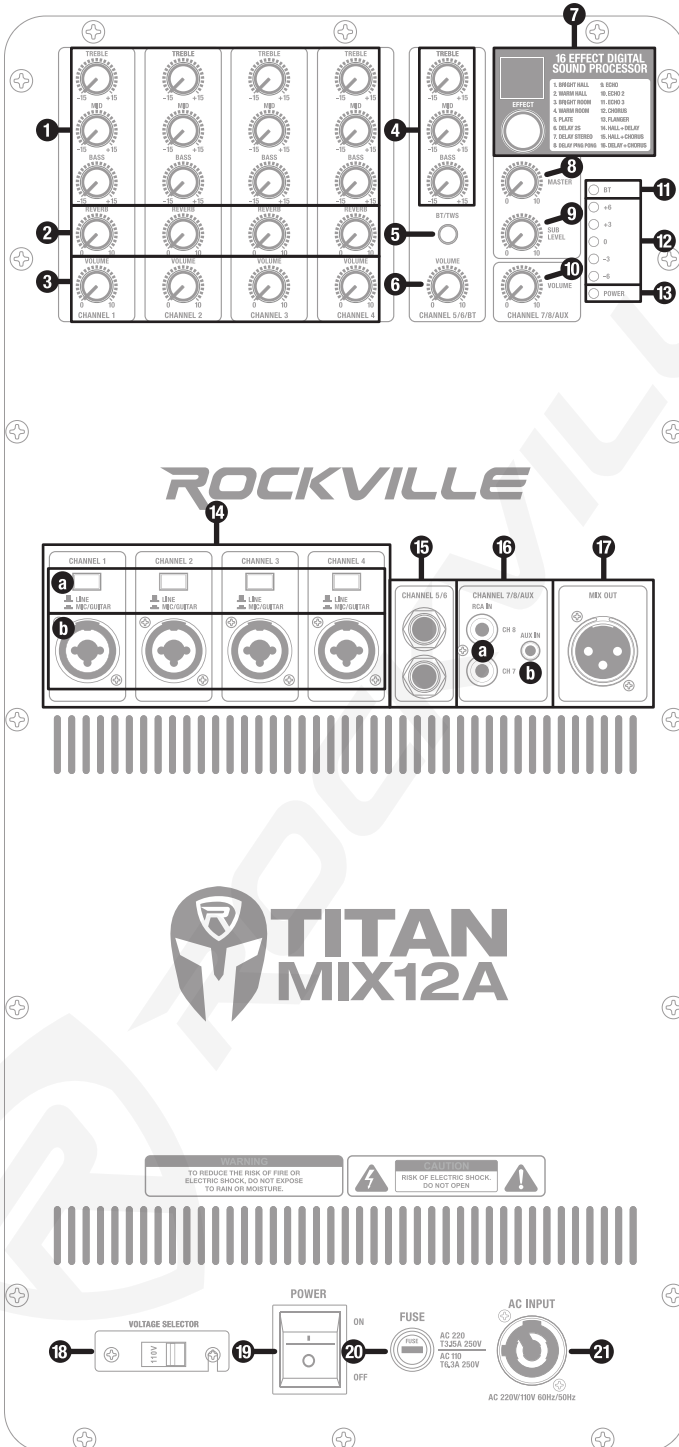
4. Volume is controlled via your device, the CH5/CH6/BT volume control knob, the SUB LEVEL knob, and the MASTER VOLUME knob. Each unit's volume is set independently. All other functions, such as playback and track selection, are controlled via your device.
5. To exit TWS linking mode, short press the BT/TWS button on either unit.

Mix Out Balanced Connection

The MIX OUT XLR port allows you to output the amplifier signal to a subwoofer, another powered speaker, or an amp or mixer, which will, in turn, send audio to other speakers. The MIX OUT output should be connected to the input of the external device using an XLR-to-XLR or XLR-to-1/4" TRS cable. We recommend you use high-quality cables such as Rockville's RCXFM20E-B XLR-to-XLR cable or the RCXMB20-B XLR-to-1/4" TRS cable.



Functions



1. CH1 - 4 Equalizer controls (Bass, Mid, and Treble)
2. CH1 - 4 Effects controls
3. CH1 - 4 Volume controls
4. CH5/6/BT Equalizer controls (Bass, Mid, and Treble)
5. WIRELESS STREAMING/WIRELESS LINKING button
6. CH5/6/BT Volume control
7. Effects selector and display
8. Master Volume control
9. Sub Level control
10. CH7/8/AUX Volume control
11. Wireless Streaming/Wireless Linking Status LED
12. Output Level LED indicators
13. Power LED indicator
14. CH1 - CH4 MIC/GUITAR/LINE input section
 - a. MIC/GUITAR/LINE selector switch: When connecting a microphone or guitar, make sure that the corresponding channel's button is in the "down" position. When connecting a line level device, make sure that the specific button is in the "up" position.
 - b. Combo XLR/¼" TRS input
15. CH 5/6 ¼" TRS inputs
16. CH 7/8/AUX
 - a. CH 7/8 RCA inputs
 - b. 3.5mm AUX in
17. MIX OUT port
18. Voltage selector switch
19. Power switch
20. User serviceable fuse
21. PowerCON power input.

Features

TITAN MIX12A

- TITAN MIX12A: 3200W Peak Power / 1600W Program Power / 800W Continuous RMS
- Light-weight, compact, and extremely loud with deep bass
- Covers up to 300 people in an 10k sq. ft space
- Built in 8-channel mixer
- Wireless stereo linking of 2 systems
- Bluetooth 5.2 for clear music streaming (65-foot range)
- USB playback (32GB max)
- SD playback (32GB max)
- Input 1- 4: Mic/Guitar/Line level XLR/¼" combo jack
- Line level RCA input
- XLR Mix output allows you to connect another speaker or amplifier
- Class D amplifier is extremely efficient with a low current draw, and approximately 90% of energy is turned into clean amplifier power
- Limiter allows the speaker to play at extremely high volumes while limiting the frequencies that cause clipping
- 12" Subwoofer with a 75 oz. magnet and 2.5" voice coil delivers loud and deep bass (600W RMS amp just for the sub)
- 8mm virgin polypropylene enclosure makes this item strong, light-weight, and reproduce clean sound
- Twelve 2.75" drivers with neodymium magnets for clean highs and mids (200W RMS amp just for the highs/mids)
- Two columns deliver crystal clear sound, even at high SPL
- Advanced DSP with multi-band compression
- Built-in Effects: 24-bit effects engine with 16 premium effects including multiple hall & room simulations, various delay options (echo), chorus, and flanger effect combinations for maximum versatility
- DSP tuned by Rockville musicians for extremely balanced sound with clear vocals, deep heart-thumping bass, and crystal-clear instruments and highs
- Built-in dual carry handles on the subwoofer unit
- Frequency Response: 38Hz – 20kHz (-6dB) and 40Hz – 19kHz (-3dB)
- Maximum SPL: 128dB
- Voltage: 110/220 voltage switch for worldwide use
- Weight of sub: 44.1lb
- Dimensions of sub (D x W x H): 17.52" x 14.57" x 22.375"
- Weight of columns: 4.5lb (lower)/5.75lb (upper)
- Dimensions of each column (D x W x H): 3.25" x 3.5" x 31" (lower)/3.25" x 3.5" x 30.5"

TITAN MIX12C

- 3400W Peak Power / 1700W Program Power / 850W Continuous RMS
- Powerful, compact, and extremely loud with deep bass
- Covers up to 400 people in a 12k sq. ft space
- Built in 8-channel mixer
- Wireless stereo linking of 2 systems
- Bluetooth 5.2 for clear music streaming (65-foot range)
- USB playback (32GB max)
- SD playback (32GB max)
- Input 1- 4: Mic/Guitar/Line level XLR/¼" combo jack
- Line level RCA input
- XLR Mix output allows you to connect another speaker or amplifier
- Class D amplifier is extremely efficient with a low current draw, and approximately 90% of energy is turned into clean amplifier power
- Limiter allows the speaker to play at extremely high volumes while limiting the frequencies that cause clipping
- 12" Subwoofers deliver loud and deep bass (600W RMS amp just for the sub)
- 75 oz. magnet and 2.5" voice coils
- Plywood enclosure coated with polyurethane
- Eight 3.5" drivers with neodymium magnets for clean highs and mids (250W RMS amp just for the highs/mids)
- Four midrange driver diffusers provide a wider horizontal coverage pattern
- Downward curved mounting pattern of lower midrange drivers provides "down-fill" vertical coverage pattern typical of well tuned line array systems
- Polyurethane coated plywood top column enclosure
- 15mm-thick plywood sub enclosure with sandblasted paint
- Advanced DSP with multi-band compression
- Built-in Effects: 24-bit effects engine with 16 premium effects including multiple hall & room simulations, various delay options (echo), chorus, and flanger effect combinations for maximum versatility
- DSP tuned by Rockville musicians for extremely balanced sound with clear vocals, deep heart-thumping bass, and crystal-clear instruments and highs
- Includes one 12 inch and one 29-1/2 inch pole to adjust the speaker columns height.
- Top mounted built-in carry handle on the subwoofer unit
- Frequency Response: 38Hz – 20kHz (-6dB) and 40Hz – 19kHz (-3dB)
- Maximum SPL: 130dB
- Voltage: 110/220 voltage switch for worldwide use
- Weight of sub: 46.75lb
- Dimensions of sub (D x W x H): 21.65" x 13.86" x 19.49"
- Weight of column: 9.75lb
- Dimensions of each column (D x W x H): 5.75" x 4.375" x 33.5"

Troubleshooting

PROBLEM	SOLUTION
No power	<ol style="list-style-type: none"> 1. Make sure the unit is plugged in and the power switch is in the ON position. 2. Check that the power cable is plugged in tightly to the unit. 3. Make sure the voltage selector switch is set to the correct voltage. 4. Check the fuse and replace if necessary. 5. If people or equipment tend to step on and roll over or stretch your power cable, it can get damaged. Always try a second cable to test for shorts in original cable. Dispose of damaged power cables immediately.
No sound/ distorted sound	<ol style="list-style-type: none"> 1. Check that all appropriate cables are plugged in correctly. 2. Check the Levels settings. Refer to the “Setting Level Controls” section on page 5 of this manual for instructions on how to properly adjust the input level controls. 4. If you are using the MIC/LINE (CH1 – 4) section inputs, make sure the MIC/LINE button is set to the correct input source. 5. Be sure your microphone is on and plugged into the correct input. 6. If using a mixing console, make sure fader and balance are set to center positions and levels are increased. Make sure the mixer is plugged into the correct input. 7. If the channel level settings are maxed out, lower the appropriate one, as you may be overdriving the unit. 8. Check volume and level settings on the unit and all input sources.
Buzzing sound	<p>Make sure you are using a proper cable. For ¼” cables, there are three types: instrument, TS (unbalanced), and TRS (balanced). Check the requirements of the connected gear and make sure you are using the appropriate cable.</p>
Mic feedback	<p>Point the mics away from the speaker. Make sure the mics are behind the speaker, not in front of it.</p>
Poor mic sound	<p>Make sure you are using the XLR part of the MIC/LINE (CH1 –4) port</p>
Bluetooth pairing/ TWS linking fails	<ol style="list-style-type: none"> 1. Check to see that both devices are turned on and that your Bluetooth device is discoverable. 2. Turn both devices off and then on. 3. Make sure you’ve selected TITAN MIX12 from your phone’s (or input source) list of available BT devices. 4. Make sure that the Bluetooth device is within 5 feet of the unit (during initial pairing). 5. Move both devices away from other Bluetooth devices, microwaves, wireless routers, and other electronics. 6. Make sure that the unit is not paired to a previously paired device or to another speaker. <p>Please refer to page 6 for Bluetooth and TWS pairing procedures.</p>

FEDERAL COMMUNICATIONS COMMISSION COMPLIANCE INFORMATION

Responsible party name: Rockville

Address: 600 Bayview Ave,
Entrance A,
Inwood, NY 11096

Hereby declares that the products TITAN MIX12A and TITAN MIX12C comply with FCC rules as mentioned in the following paragraph:

This device complies with Part 15 of the FCC rules. Operation is subject to the following two conditions: (1) this device may not cause harmful interference, and (2) this device must accept any interference received, including interference that may cause undesired operation.

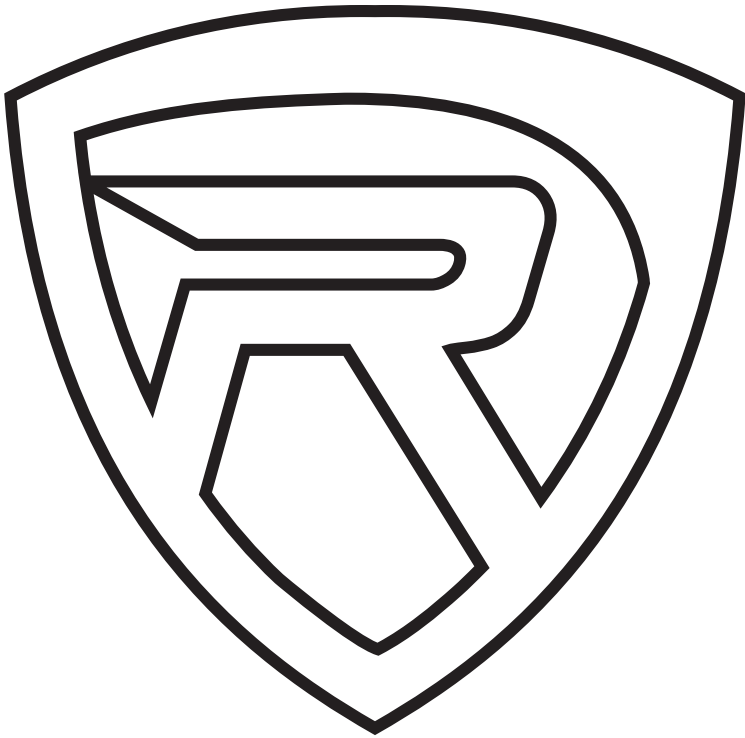
Note: This equipment has been tested and found to comply with the limits for a Class B digital device, pursuant to Part 15 of the FCC rules. These limits are designed to provide reasonable protection against harmful interference in a residential installation. This equipment generates, uses, and can radiate radio frequency energy and, if not installed and used in accordance with the instructions, may cause harmful interference to radio communications. However, there is no guarantee that interference will not occur in a particular installation. If this equipment does cause harmful interference to radio or television reception, which can be determined by turning the equipment off and on, the user is encouraged to try to correct the interference by one or more of the following measures:

- Reorient or relocate the receiving antenna.
- Increase the separation between the equipment and receiver.
- Connect the equipment to an outlet on a circuit different from that to which the receiver is connected.
- Consult the dealer or an experienced radio/TV technician for help.





ROCKVILLE



RockvilleAudio.com

© 2025 ROCKVILLE // Features and specifications are subject to change and/or improvement without notice.