

APP BAR 24 Owner's Manual

Thank you for purchasing this Rockville APP BAR 24. Please read this manual carefully. Should you need assistance, please call our technical help line at 1-646-758-0144, 24 hours a day/7 days a week. For how-to videos, this manual, and other helpful information, visit rockvillesupport.com/app-bar-24 or scan the QR code.

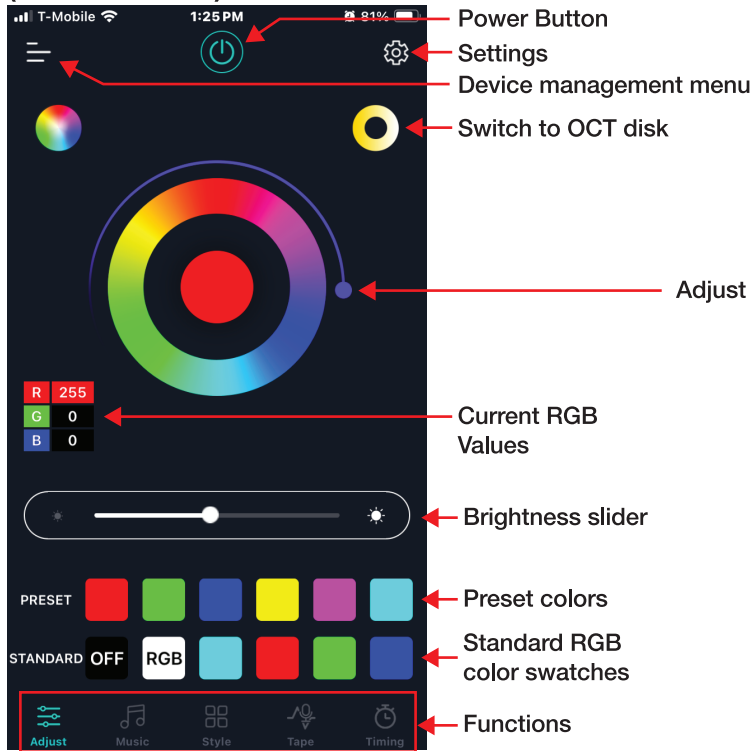
Getting Started

Begin by scanning the corresponding QR code on the left and downloading the **fi light** app. To pair your APP BAR 24 to the app, follow the directions below.

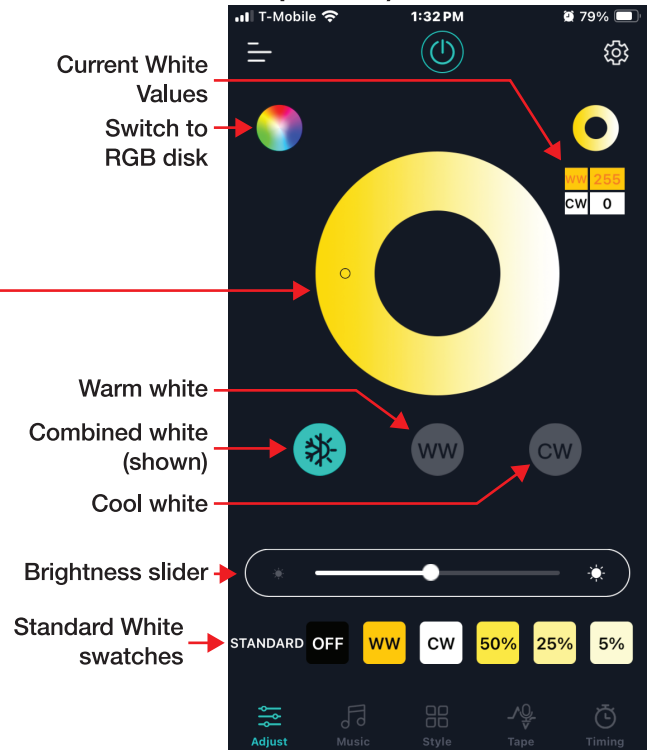
1. Make sure your devices's Bluetooth is on and that it is discoverable. For Android devices, be sure to turn on Location Services.
2. Turn on your APP BAR and then launch the app. It will scan for and automatically connect to the unit.

Getting to Know the App

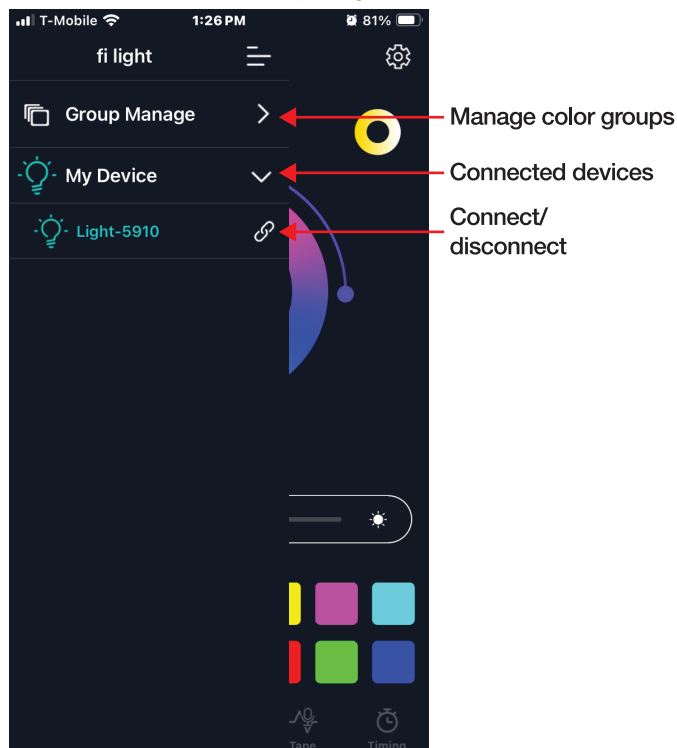
Main Screen/RGB (Red Green Blue) Controls



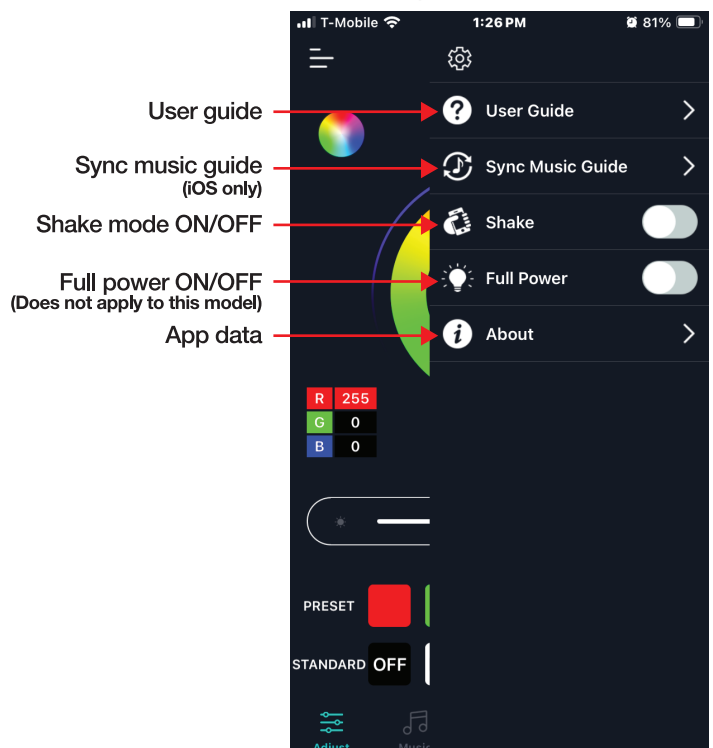
OCT (correlated colour temperature) Controls



Device Management Menu: Press the three line icon or swipe right.



Settings Menu: Press the gear icon or swipe left.



Getting to Know the App

Music

Track slider

Elapsed track time 01:36

Previous track

Track time 03:28

Playback modes

- All
- Random
- Repeat current track

Next track

Track listing

- Vicetone, Cozi Zuehlsdorff - Nevada
- 2 Alan Walker - Play
- 3 Alan Walker - Sometimes

Style (modes)

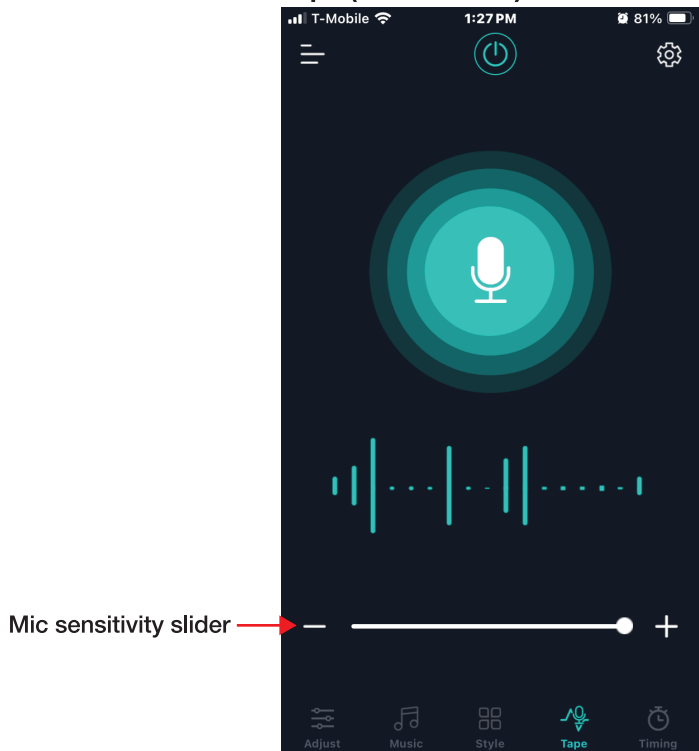
Currently selected style

Speed slider

Style selection (27)

- Pulsating rainbow
- Pulsating red
- Pulsating green
- Pulsating blue
- Pulsating yellow
- Pulsating cyan
- Pulsating purple
- Pulsating white
- Pulsating red, green
- Pulsating red, blue
- Pulsating green, blue
- Flashing rainbow
- Flashing red
- Flashing green
- Flashing blue
- Flashing yellow
- Flashing cyan
- Flashing purple
- Flashing white
- Jumping rainbow
- Pulsating warm white
- Pulsating cool white
- Pulsating warm white, cool white
- Flashing warm white
- Flashing cool white
- Flashing warm white, cool white
- Jumping warm white, cool white

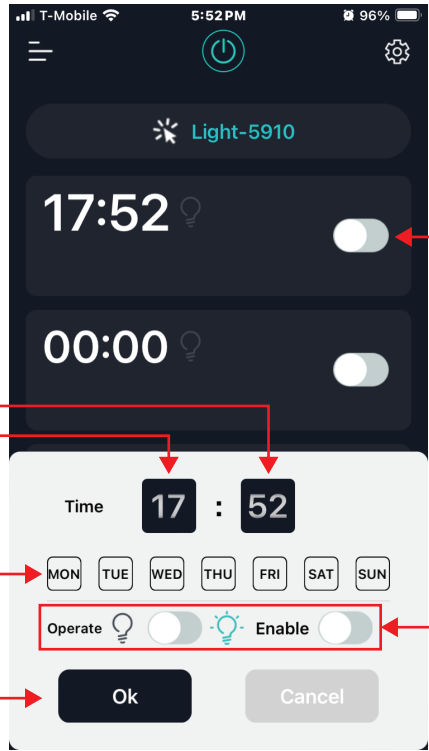
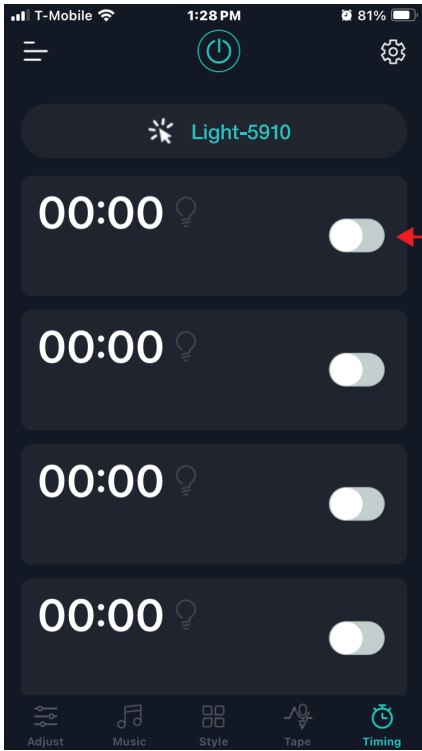
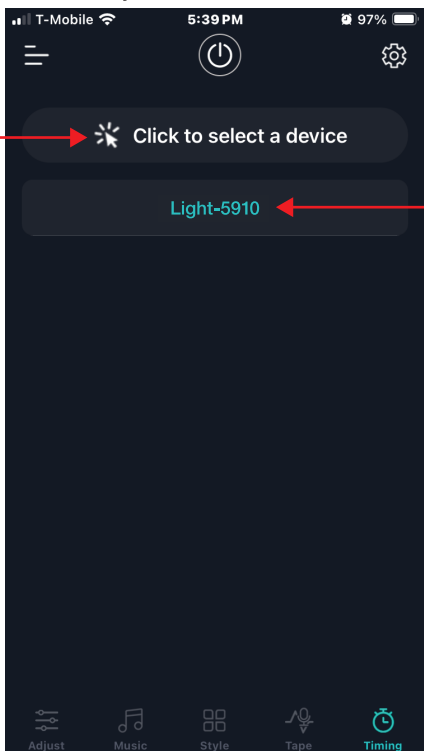
Tape (sound mode)



Timing

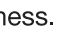
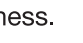
- 1. Click to select a device
- 2. Select your device from the list.

- 3. Select a time slot



Set timer ON/OFF times

Remote Control

1. CW: Press to turn-on or switch to cool white light. This button can be used in conjunction with the R/G/B buttons described in point 10.
2. ON/OFF: Turns the unit on or off.
3. WW: Press to turn-on warm white light. This button can be used in conjunction with the R/G/B buttons described in point 10.
4. : Press to adjust brightness.
- 5 SPEED -/+ : Press to adjust the speed of the selected mode.
- 6 MODE-/+ : Press to switch between the 31 available dynamic modes.
7. COLOR: Press to switch between 10 available static colors.
8. DEMO: Press this button to enter color fade mode.
9. BLACKOUT: Pressing this button will turn the light off and return it to default settings. To turn the light back on, use the ON/OFF button.
10. R/G/B/W: Press each individual button to turn on or off the specific color. The R, G, and B Buttons can also be used in conjunction to create custom colors. For example, you can press R then press B and the light will show a color which is a combination of R and B. Press R,B,G and you will see a color that is a combination of those three colors. The same three buttons can be used in conjunction with the WW (point 3) and the CW (point 1) buttons. Use the  buttons to adjust brightness. Please note, this color blending function is *only* available via the remote. It cannot be done with the app.
11. COLOR PALETTE: Press anyone of the buttons to select the color depicted.

