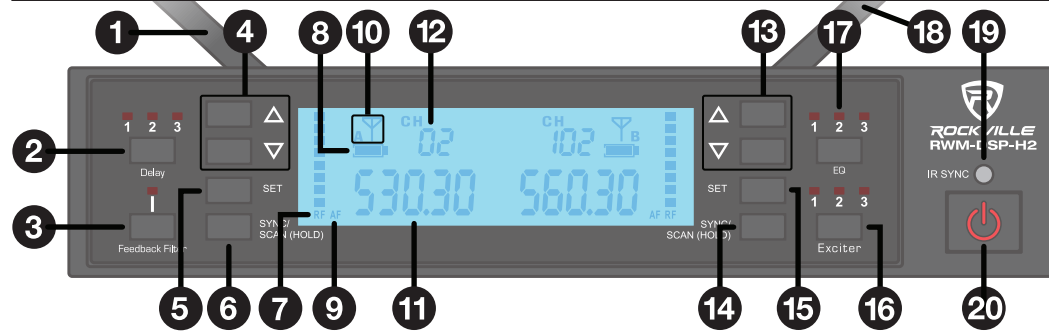


ROCKVILLE RWM-DSP Series Quick Start Guide

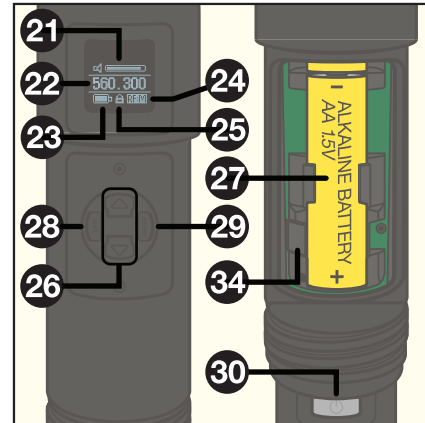
Thank you for purchasing this Rockville RWM-DSP Series Wireless UHF 200 Channel Microphone System. Please read this quick start guide carefully for proper use of your microphone system. Should you need assistance, please call our technical help line at 1-646-758-0144, 24 hours a day/7 days a week. Scan the **QR codes** or visit the **URLs** to access how-to video(s), this quick start guide, and other important information you may need to get the most out of your item.



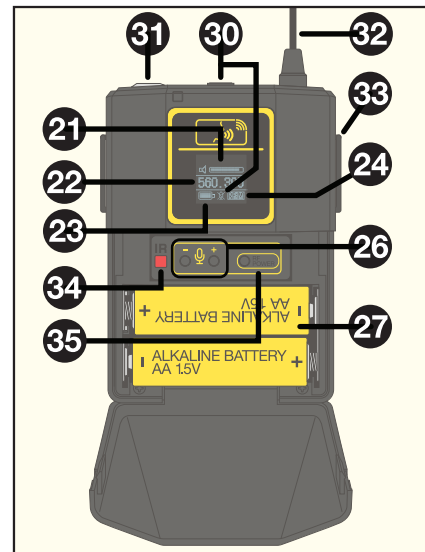
1 FUNCTIONS



1. Mic A Antenna
2. Delay (echo): Press this button to cycle through three levels of delay, 1 being the least and 3 being the most. A red LED above the number will indicate the current setting. When the LED is not illuminated, the delay effect is inactive.
3. Feedback filter: Press to prevent screeching or humming sounds resulting from the return of the output signal from the mics. The red LED indicates that the filter is in use.
4. Mic A Volume control: Press to the up/down buttons to adjust Mic A's volume.
5. Mic A Frequency set: Works in conjunction with the SYNC/SCAN button. Press once and the Ch number begins to flash. Use the up or down arrows to change the ch/frequency. Once you've found a frequency, sync the mic or belt pack using the sync button (see item 6).
6. Mic A Sync/Scan (Hold): Long press to start scanning for available frequencies. The unit will look for the cleanest signals in the area with the least interference. Once a frequency is found, pressing the set button engages sync. IR will flash on the unit screen. To sync the body pack, open its front cover and hold it in front of the IR SYNC LED located above the unit's power button. To sync the handheld, hold the ENTER button to unlock the mic. Now face the battery compartment towards the unit. Please note, although the unit is capable of searching 200 channels, it will ultimately pick out the best ones.
7. RF Signal strength: Indicates the strength of the corresponding mic's signal based on distance between the mic and the unit.
8. Mic Battery: Indicates the battery level of the corresponding mic.



9. AF Signal strength: Indicates when the corresponding mic is transmitting audio and the level of the audio.
10. Connection indicator: Appears when the mics are connected to the receiver.
11. Frequency: Shows the current frequency that the unit is receiving.
12. Mic Channel indicator: Shows the mic's current channel.
13. Mic B Volume control: Press to the up/down buttons to adjust Mic B's volume.
14. Mic B Sync/Scan (Hold) (refer to item 6)
15. Mic B Frequency set (refer to item 5)
16. Exciter: Adds harmonic presence to increase mid range frequency presence. There are three levels, 1 being the least and 3 the most. A red LED above the number will indicate the current setting. When the LED is not illuminated, the delay effect is inactive.
17. EQ: 3 band EQ attenuates the low frequency cutoff, 1 cuts bass, 2 cuts high frequencies, 3 cuts some low and high frequencies. A red LED above the number will indicate the current setting. When the LED is not illuminated, the delay effect is inactive.
18. Mic B Antenna
19. IR Sync: Transmits frequency information to the mics when you short press the SYNC/SCAN button.
20. Power button: Press and hold to turn the unit on or off. The button will be illuminated red when the unit is on.

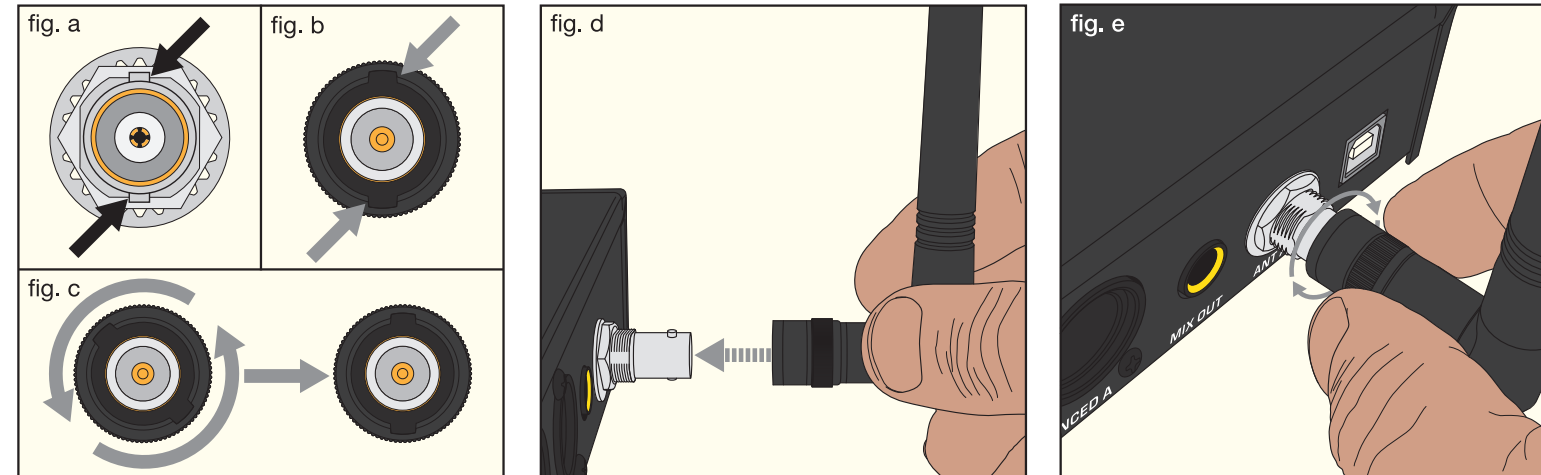


21. Mic volume level indicator (handset and transmitter)
22. Mic frequency (mic and transmitter)
23. Mic battery level (mic and transmitter)
24. RF level setting: indicates the strength of the RF signal transmitted to the receiver. A higher setting means better connectivity but shorter battery life.
25. Mic lock indicator (mic only)
26. Mic volume buttons (mic and transmitter)
27. Battery compartment. Both units require 2 AA batteries (included).
28. Exit (mic only): press to cycle through RF power settings (low, mid, high).
29. Enter (mic only): Long press to unlock the mic.
30. Power button (handset and transmitter): Long press to turn the mic on or off (mic only). Short press to mute the unit and the mute icon will light up (transmitter only).
31. 3.5mm jack (transmitter only)
32. Antenna (transmitter only)
33. Belt clip (transmitter only)
34. IR transmitter (mic and transmitter)
35. RF Power (transmitter only): press to cycle through RF power settings (low, mid, high). A higher setting means better connectivity but shorter battery life.

2 SETUP

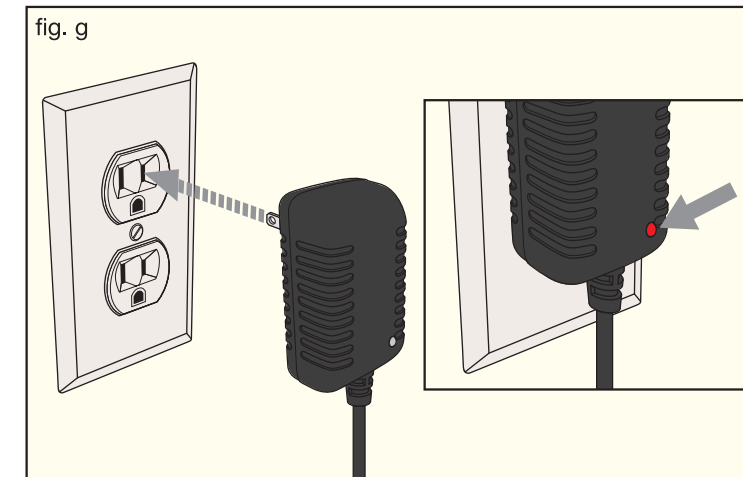
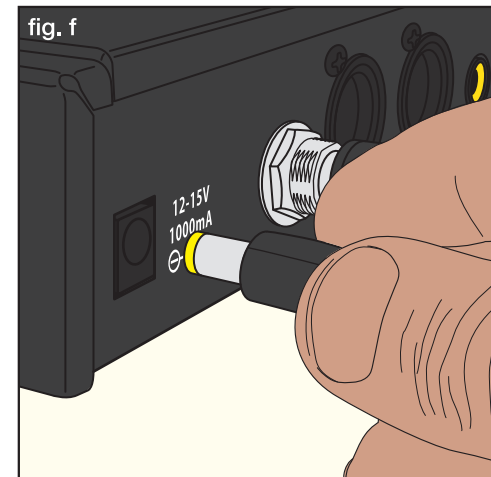
Installing the Antennas

1. To attach the antennas locate the antenna ports at the back of the unit. These ports have two small metal posts on the cylinder, one at the top and one at the bottom (fig. a).
2. The antennas' connector has two openings that correspond to the metal ports on the antenna port (fig. b). Turn the locking bezel on the antenna connector until the openings are vertically aligned (fig. c).
3. Line up the antenna's connector with the port and slide it onto the port (fig. d).
4. Firmly grasp the antenna connector and turn the locking bezel clockwise until you feel it lock (fig. e). Repeat these steps for the other antenna.



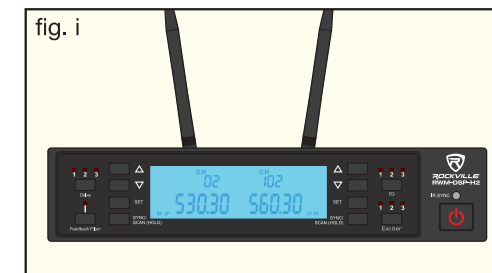
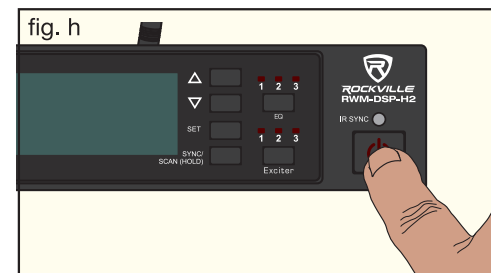
Connecting the Power Supply

1. Plug the smaller end of the power supply into the power input port (fig. f). Plug the power supply to a wall socket (fig.g).
2. The power supply plugs features a red LED which indicates it is operating properly (fig. g, inset). If the LED does not light up, double check the connection. If the problem persists, please contact Rockville customer support.



Transmitter

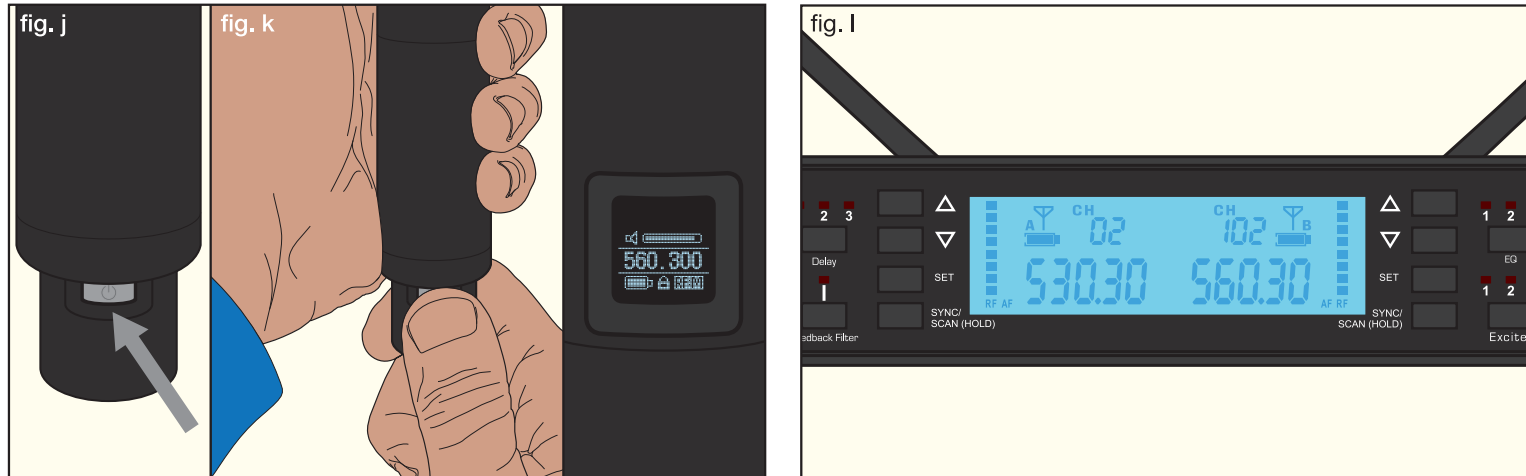
Turn on the receiver by pressing and holding the power button (fig. h) until the LCD screen lights up (fig. i).



2 SETUP (continued)

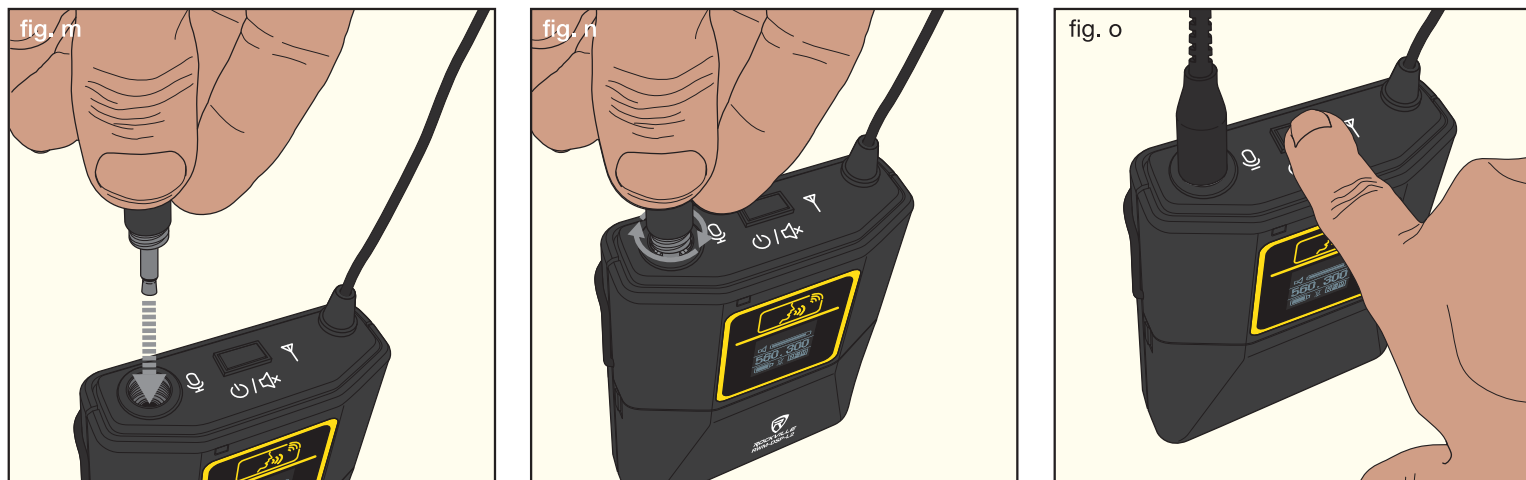
Hand-held Microphones

1. Turn on the microphones by pressing and holding the power button located near the bottom of the microphone body (fig. j) until the microphones' LCD screens light up.
2. The microphones will automatically connect to the receiver. If connection is successful, they will show up on the receiver's LCD display as A and B (fig. l).



Lavalier/Headset

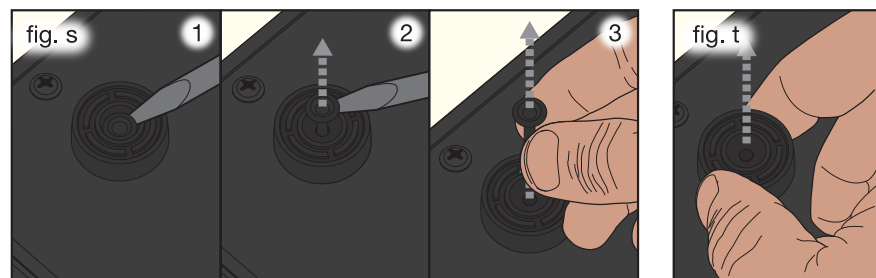
1. To connect either the Lavalier mic or headset to the body pack insert the threaded 3.5mm jack into the port at the top of the body (fig. m). Once it clicks, turn the headphone jack clockwise until it is firmly seated (fig. n). Do not overtighten.
2. Press and hold the power button at the top of the body pack (fig. o) until the red LED and the LCD screen light up.
3. The body pack should automatically connect to the unit.



Rack Mounting

Removing Rubber Feet

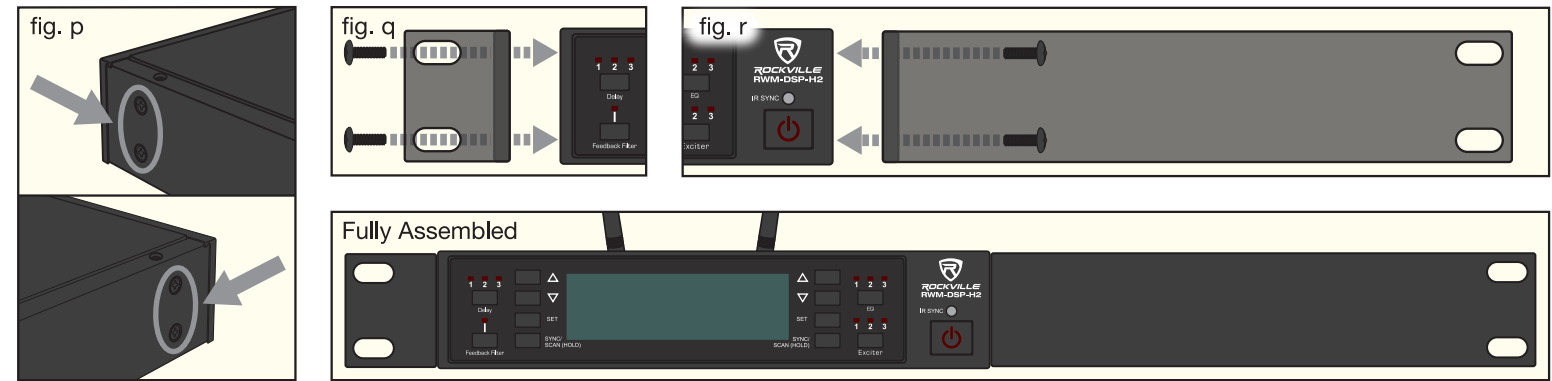
Prior to rack mounting one RWM-DSP receiver or two RWM-DSP receivers side by side, you must remove the rubber feet at the bottom of the unit. Begin by using a small flat-head screw driver or other prying tool to carefully remove the rubber post in the middle of the foot (fig. s, 1 - 3). Now pull the foot away from the unit (fig. t). Repeat this procedure for the other feet. To reattach the feet, insert one into each corresponding hole at the bottom of the unit. Then reinsert the rubber post until it falls into place. Ensure the feet are properly secured.



Single Unit Rack Mounting

Because the RWM-DSP receiver is not wide enough to fill an entire rack, it includes a short rack ear, a long rack ear, and a joining piece.

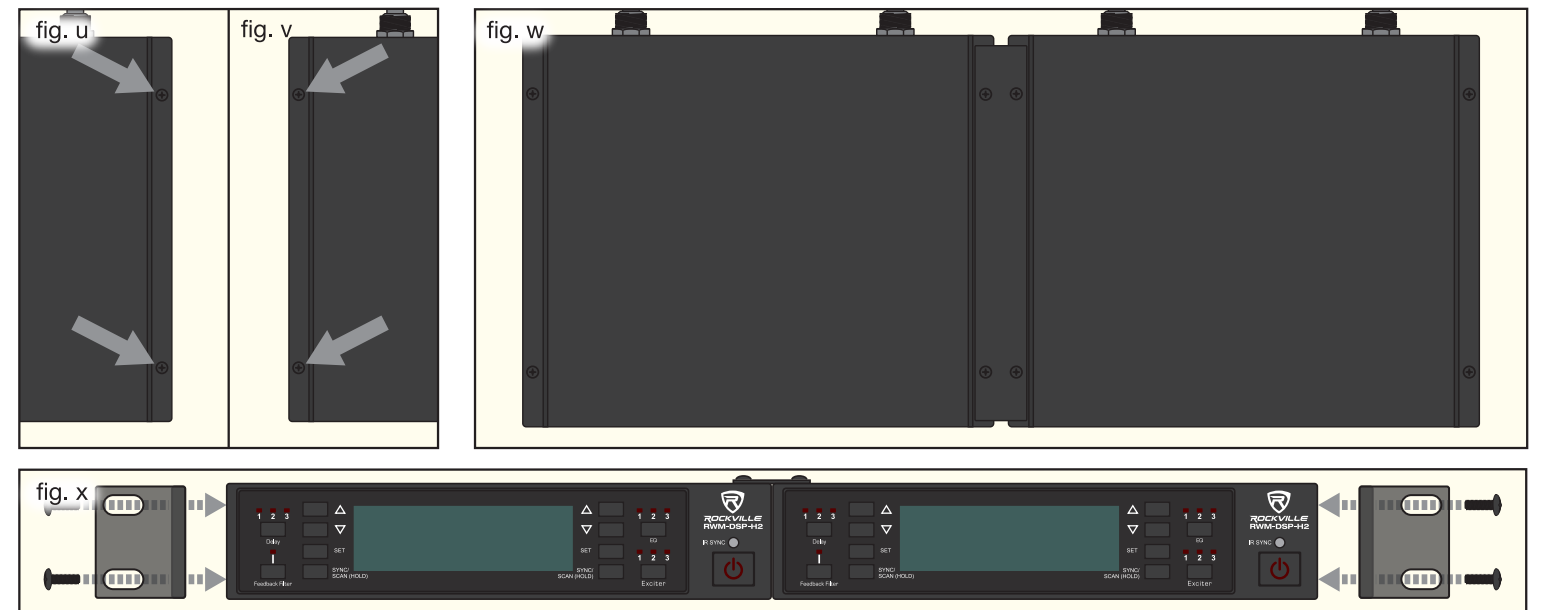
1. Begin by removing the screws at the front of either side of the unit (fig. p).
2. Use one set of screws to attach the short rack ear (fig. q) and the other to attach the long rack ear (fig. r).



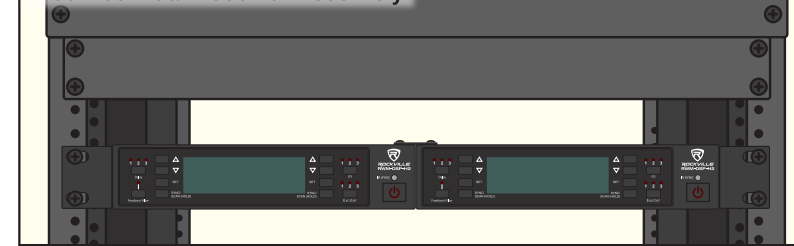
Dual Unit Rack Mounting

When rack mounting two RWM-DSP receivers side by side, use the joining piece as shown below.

1. Remove the screws on the top right side of one unit (fig. u) and the top left side of the other unit (fig. v).
2. Place the units side by side and use the screws to attach the short plate to the units as shown in fig. w.
3. Attach a short rack ear on the left and right sides of the joined units (fig. x).
4. Now mount the dual receiver assembly to your rack as per the rack manufacturers instructions.



Mounted Dual Receiver Assembly



3 SOFTWARE

Download/Install

1. Connect the RWM-DSP unit to your PC using the included USB cable.
2. Go to <https://rockvillesupport.com/rwm-dsp-l2> or <https://rockvillesupport.com/rwm-dsp-h2>. Click on the downloads tab, then click on the download link.

3. Find and launch the downloaded EXE file which will launch the X Audio DSP web page in your default browser.
4. Locate the app's product ID field, type "MIC-NET" (all caps), then click the login button. The app will search for and locate the connected RWM-DSP unit.

Initial Setup

1. After the app has located your RWM-DSP unit, it will show up in the app. Click on your console to launch the interface. Please note, settings will be set to default. Any changes you make to the settings can be saved as a new default.
2. On the home page you will see a tab labeled CONSOLE and one labeled FREQ SETTING. The CONSOLE tab is where you access the main interface. The FREQ SETTING tab is where you can perform UHF scan and channel scan.
3. All buttons on the unit are synced with the corresponding buttons in app's UI.
4. You can setup multiple user profiles with each user's personal settings as default.

For more detailed information on how to install and use the X Audio DSP web app, please scan the QR codes or visit the URLs on the other side of this sheet. Alternately, you can call our technical help line at 1-646-758-0144, 24 hours a day/7 days a week.